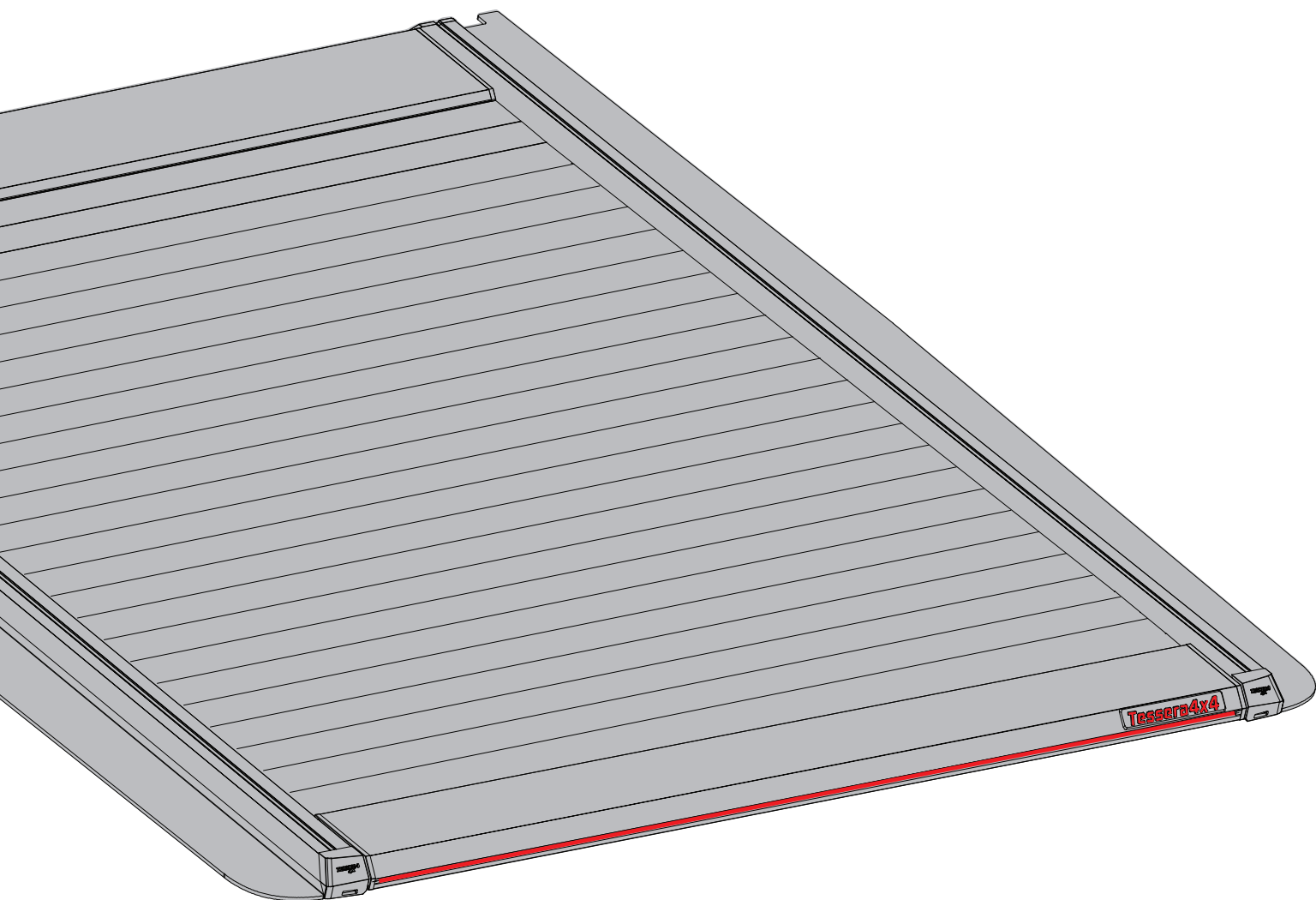


Tessera SE

Owners Manual



CAUTION: !!! Keep it in safe place

Dear Customer,

Thank you for choosing **Tessera SE!**

We're proud to welcome you to the **Tessera4x4 accessories family** and thank you for selecting one of the most advanced manual roll-top covers on the market.

The **Tessera SE** is engineered for professionals and big tenders who value functionality, strength, and premium performance.

Get Started with Your Tessera SE

If you haven't started using it yet, here are a few key features to know:

- **Manual Smooth Operation with Easy Access** – A unique spring-free design allows smooth and effortless manual operation, without compromising strength or durability.
- **Knife-Proof Slats** – Made from high-grade aluminum with knife-resistant technology for superior cargo protection.
- **Internal Locking System (ILS)** – Access the trunk securely with a strap or interior handle. Offers advanced anti-theft security in all weather conditions.
- **5mm Reinforced Side Rails** – Specially shaped to match each truck model, enhancing weatherproofing and installation strength.
- **Exclusive T-Slot System** – Built-in tracks for easy, no-drill installation of roll bars, crossbars, and other accessories.
- **Optional No-Drill Kits** – Add roll bars (RB-Kit) or side handrails (KOY-Kit) easily supports light-duty use up to 70kg.
- **Advanced Drainage System** – Oversized main drains handle up to 60L/min, keeping your cargo dry in heavy rain.
- **Anti-Leaf System (ALS)** – Prevents leaves and debris from clogging drains a first-of-its-kind feature in the global roll-top market.
- **Sealed Slat Design** – Each aluminum slat is embedded with silicon seals for optimal water resistance.
- **Compact Canister** – Among the smallest on the market, it maximizes load space and preserves your truck bed capacity.
- **Aerodynamic Efficiency** – Sleek low-profile design improves airflow, reduces drag, and enhances fuel economy.

Need Help?

If you have any questions or need assistance, don't hesitate to contact us at **info@gianso.gr**. Our dedicated team is here to support you!

Stay Connected!

We'd love to see your **Tessera SE** in action. Share your setup and tag us on social media:

Website: <https://www.tessera4x4.com>

Instagram: https://www.instagram.com/Tessera4x4_Accessories/

Facebook: <https://www.facebook.com/Tessera4x4.Accessories.Tessera4x4Rolls>

TikTok: <https://www.tiktok.com/@tessera4x4>



Thank you once again for your purchase. We hope your **Tessera SE** delivers exceptional reliability and performance.

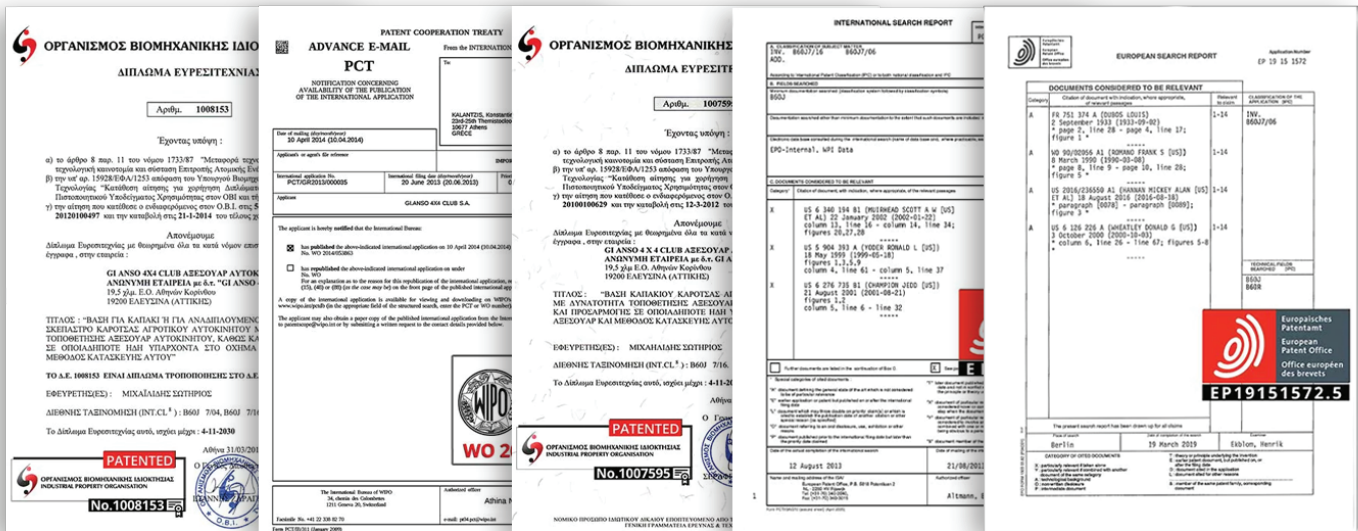
Best regards,

Tessera4x4 Accessories Team

SERIAL NUMBER: Tessera SE

SERIAL NUMBER
Tessera SE

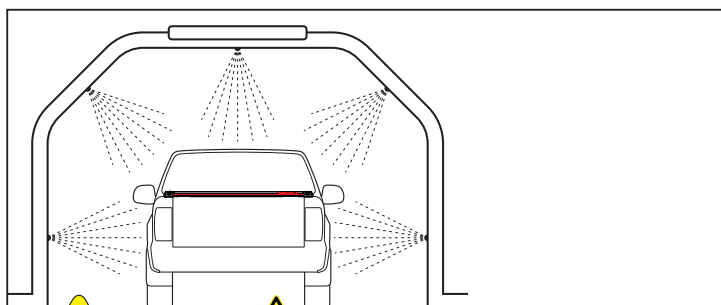
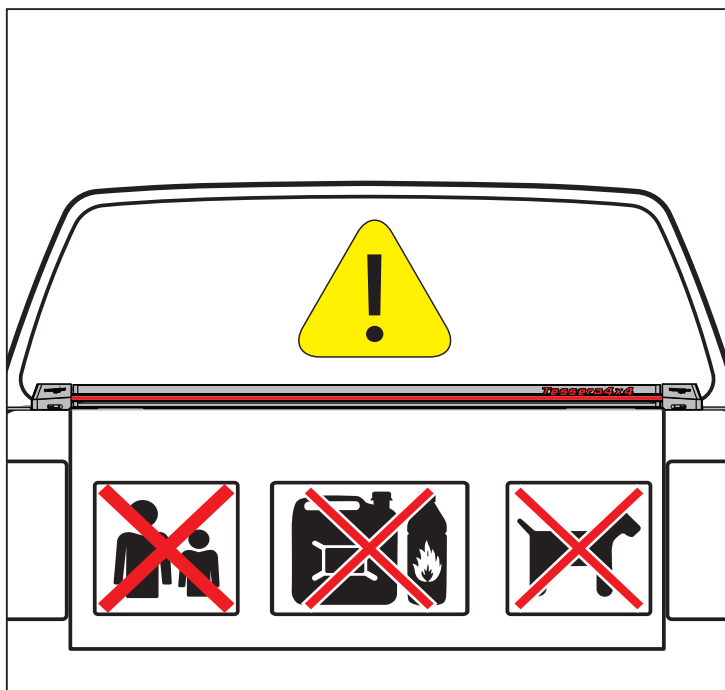
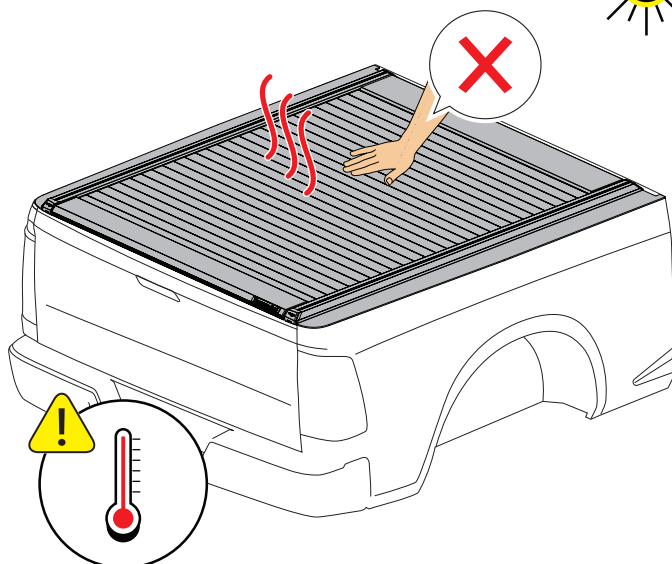
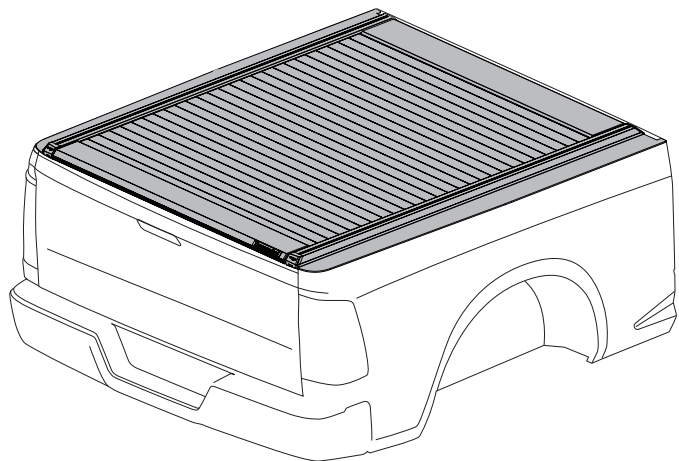
5 patents



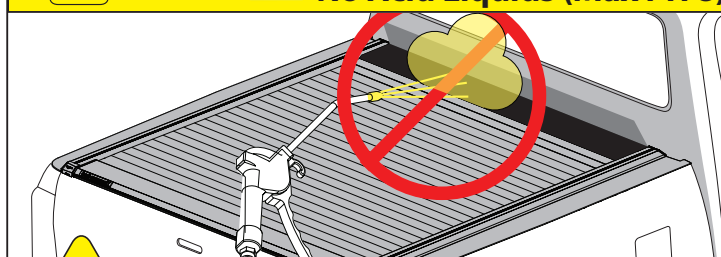
3 TUV Certifications



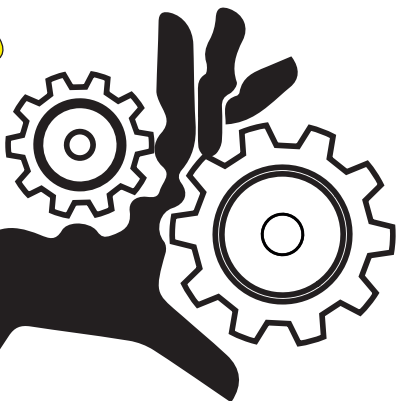
General Warnings



CAUTION **No Acid Liquids (Max PH 8)**

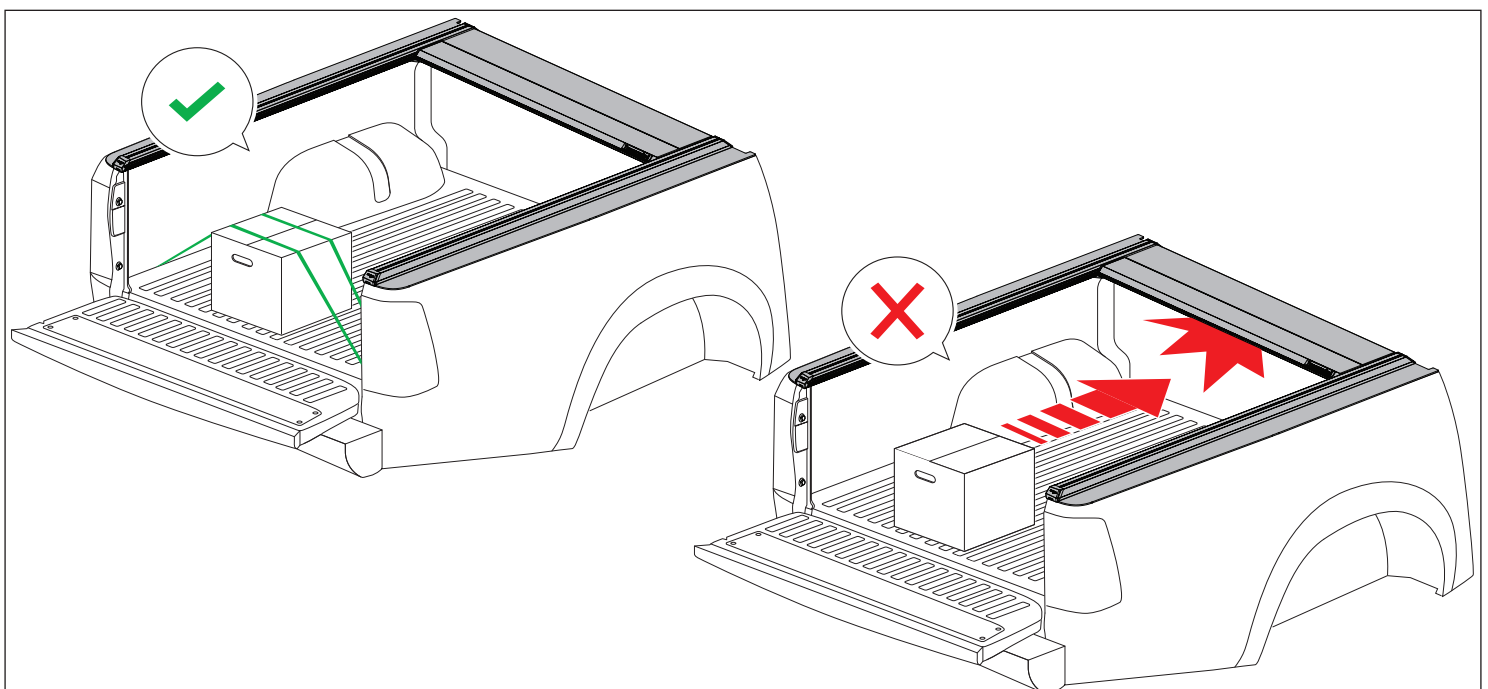
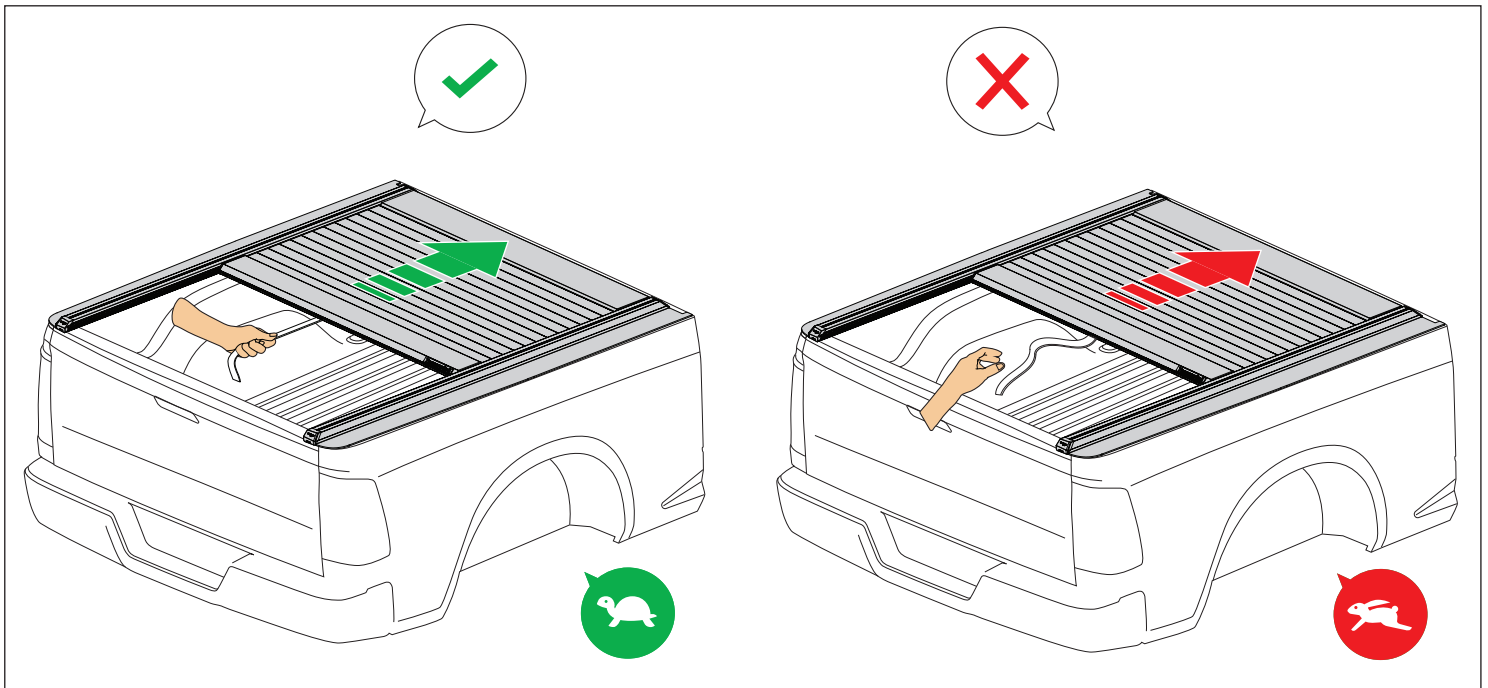
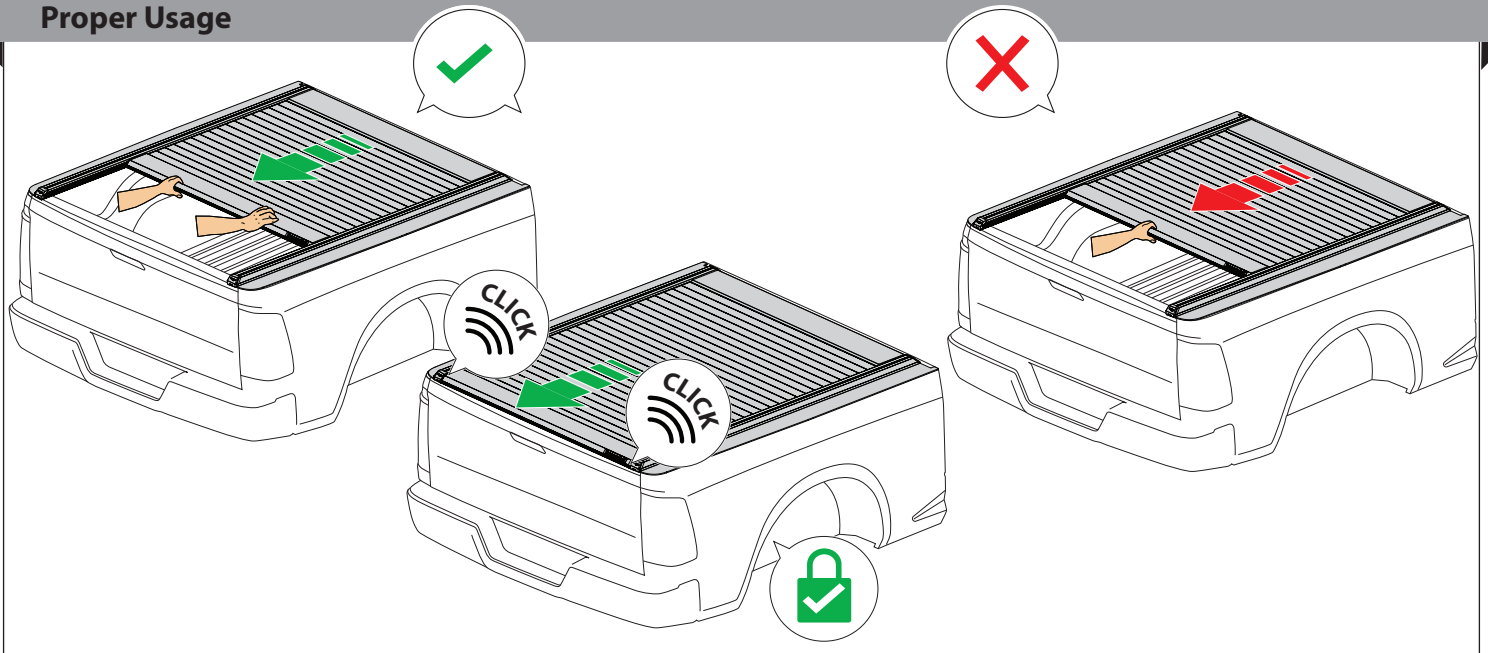


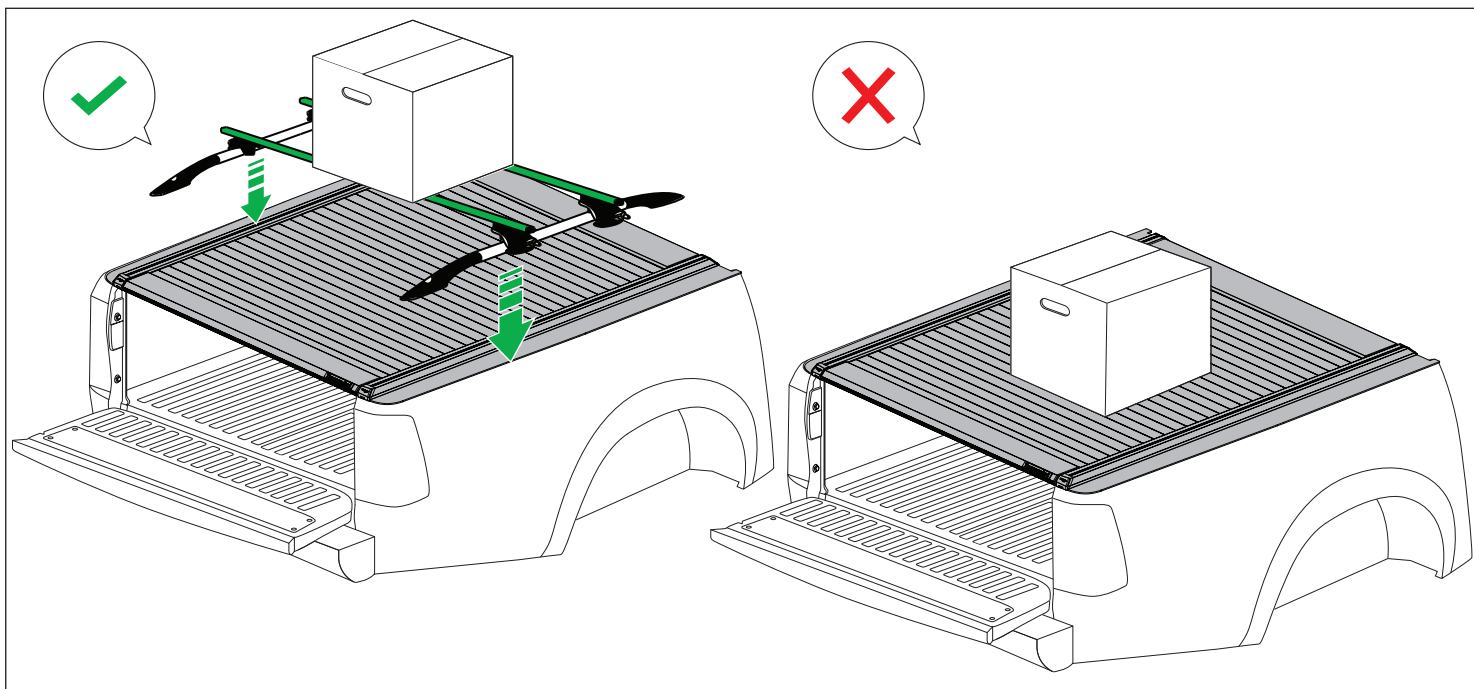
CAUTION **No Water or Air Pressure to prevent accidental opening**



CAUTION: Do not operate with canister's cover OPENED!

Proper Usage

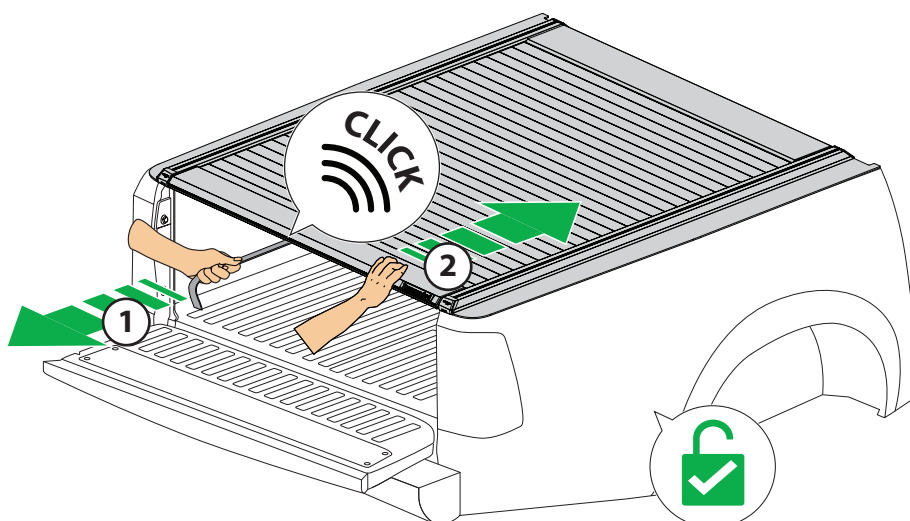




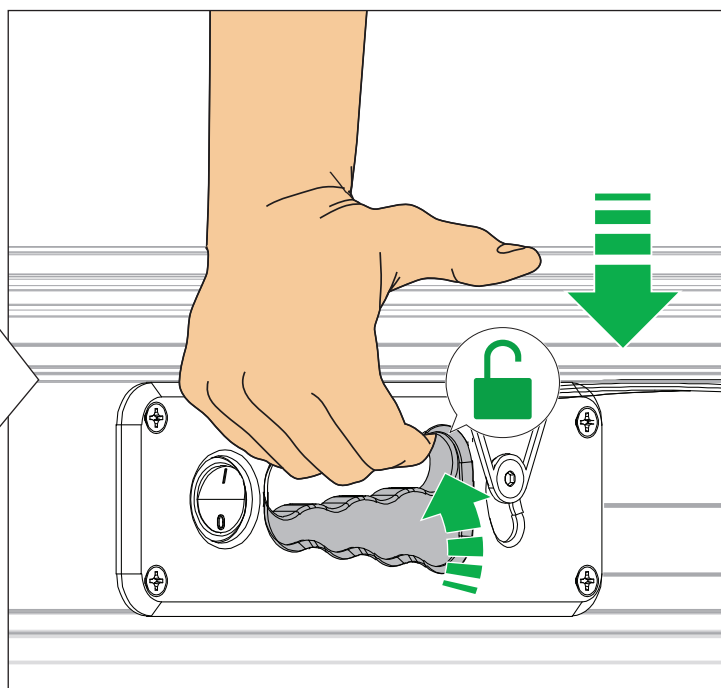
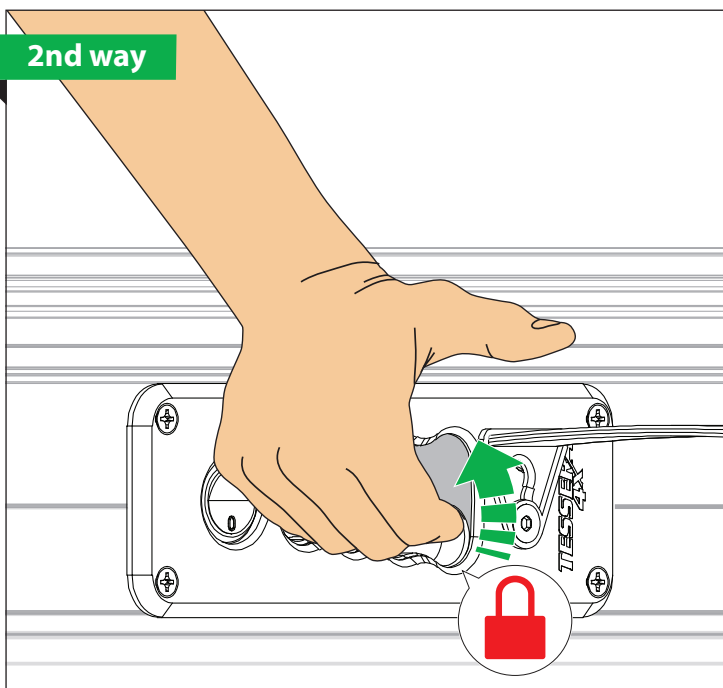
Operation/Settings:

Open/Close (2 Ways)

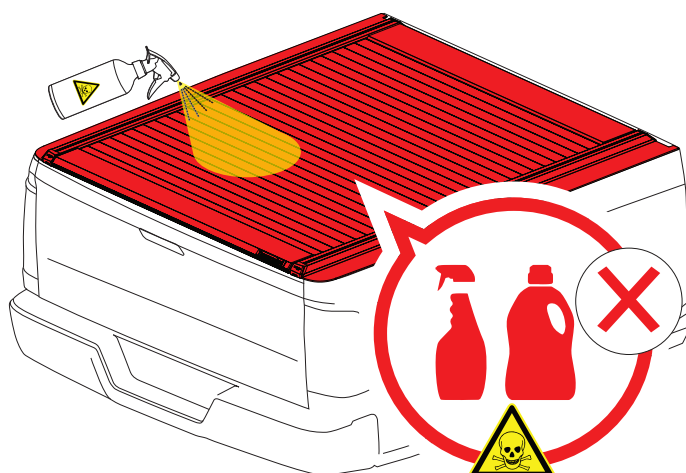
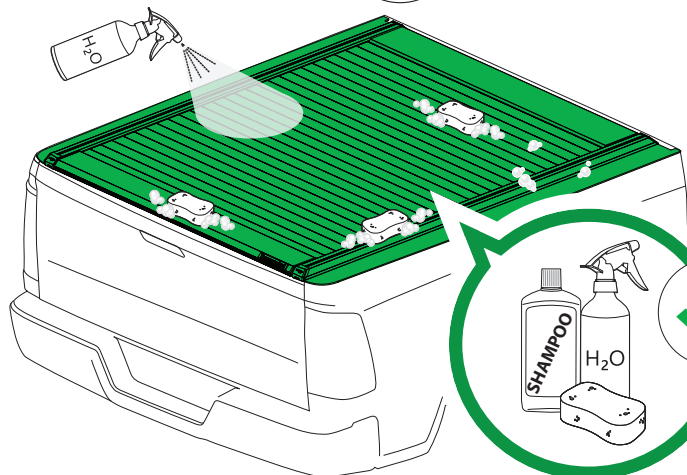
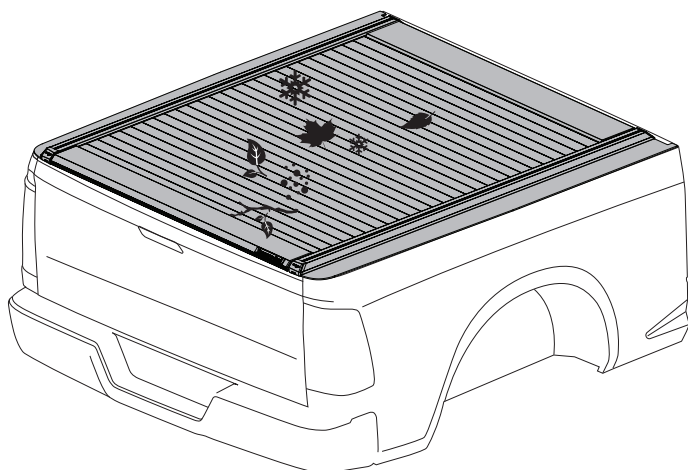
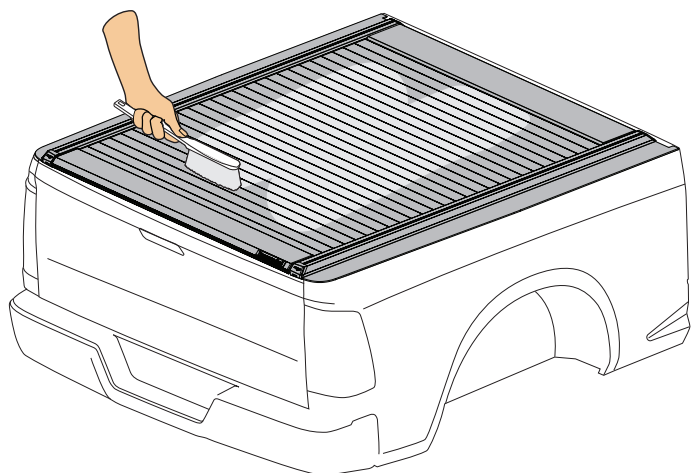
1st way



2nd way

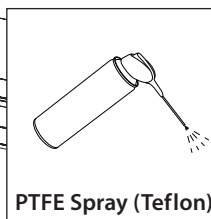
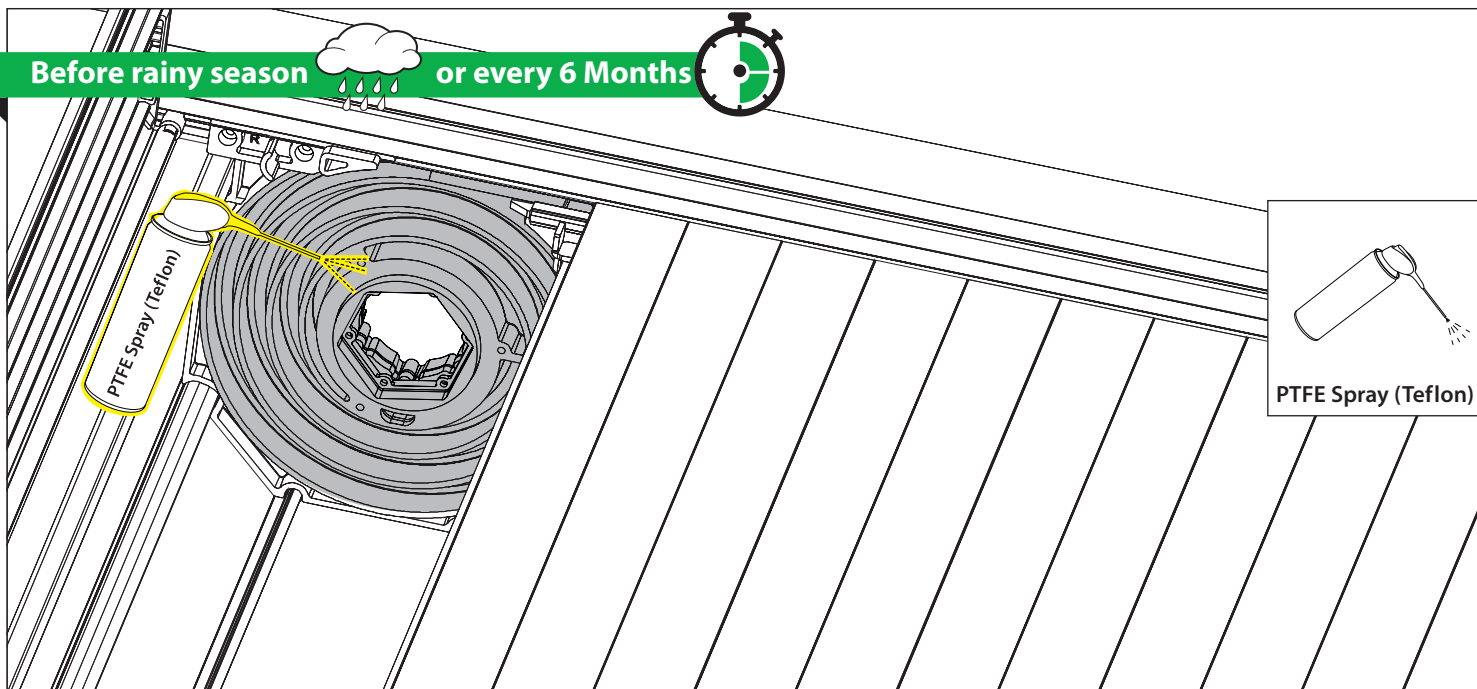


Maintenance



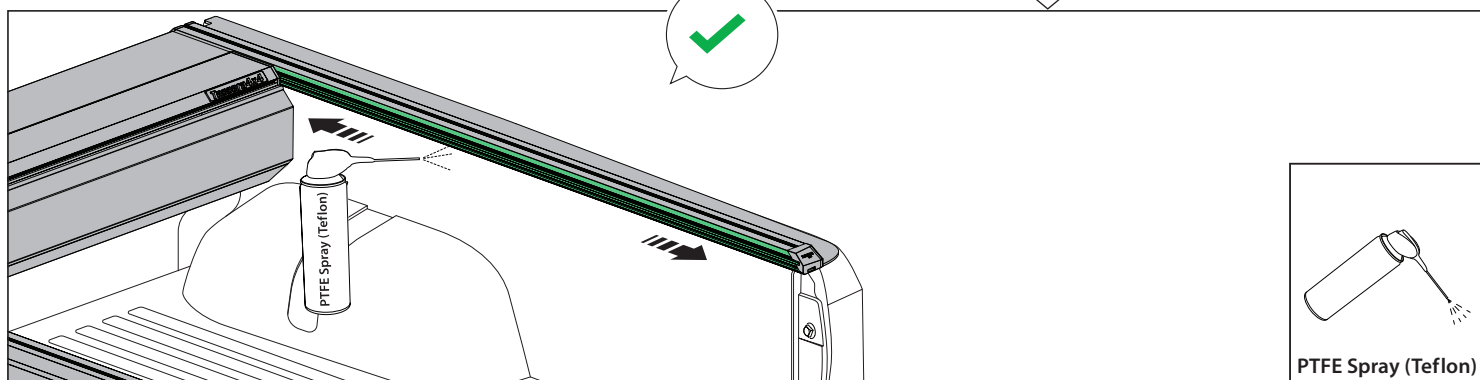
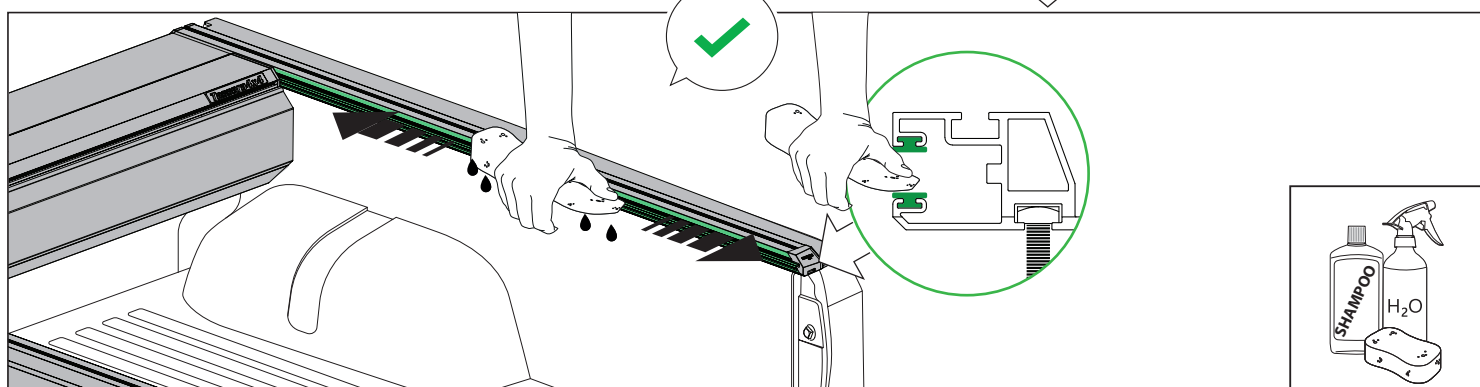
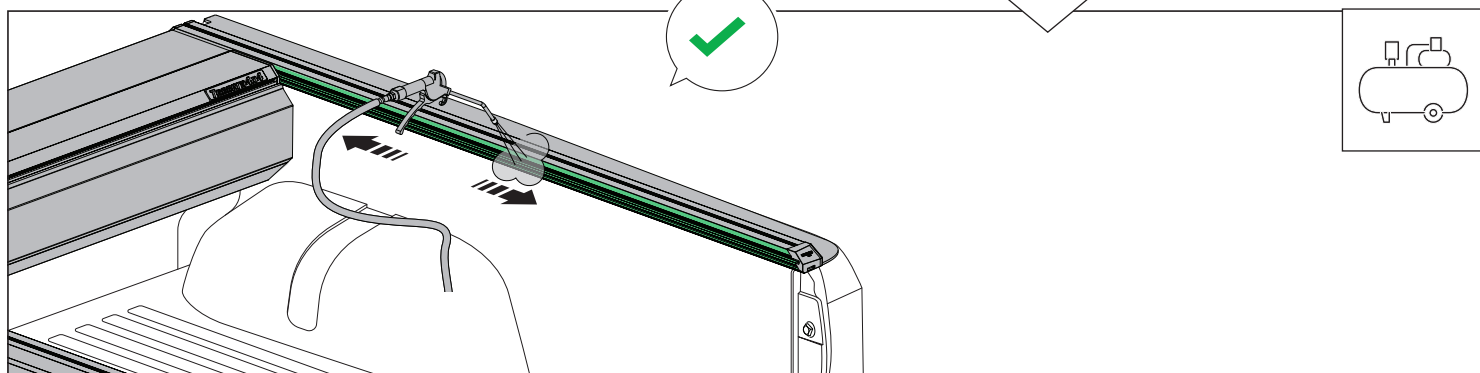
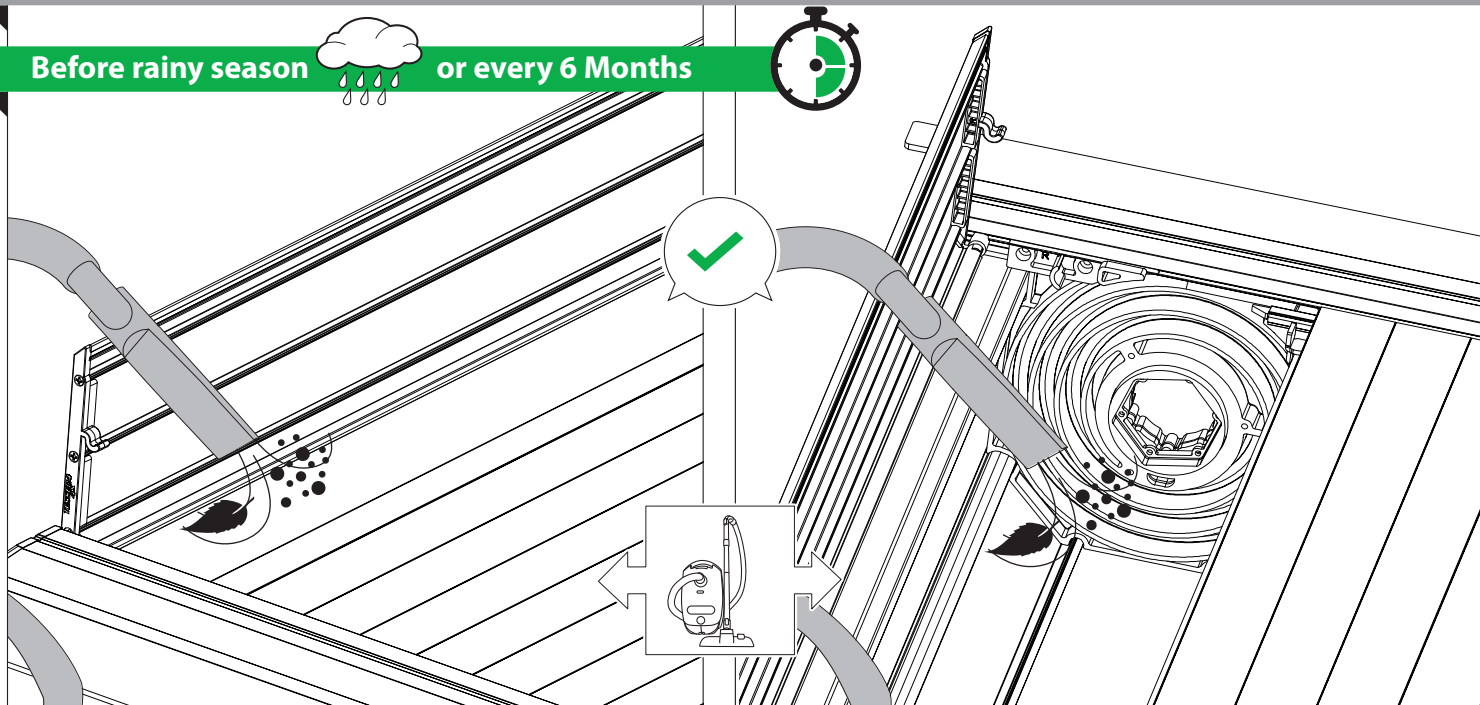
 **CAUTION**  **No Acid Liquids**

Before rainy season  or every 6 Months



Maintenance

Before rainy season  or every 6 Months 





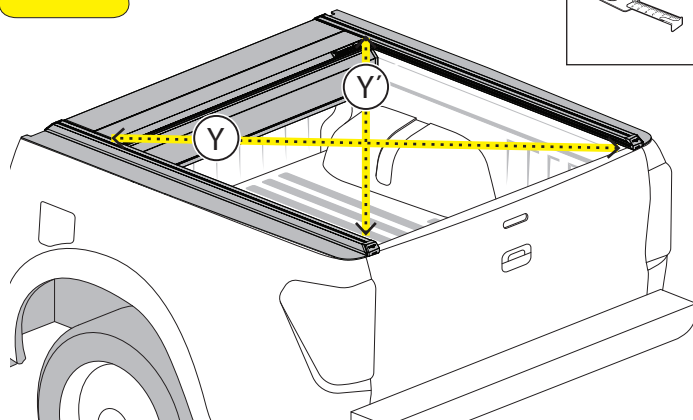
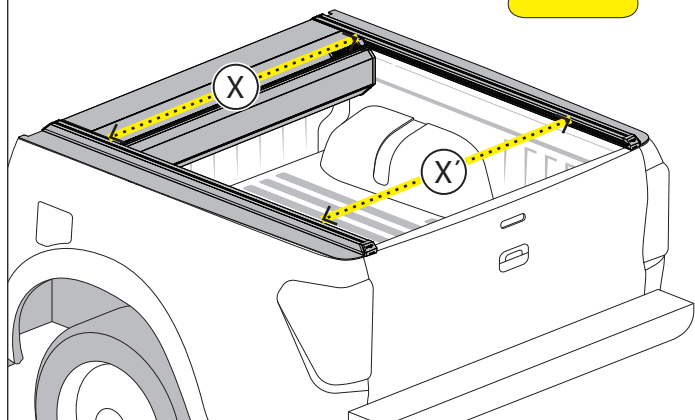
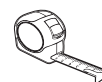
Every 12 Months

CAUTION

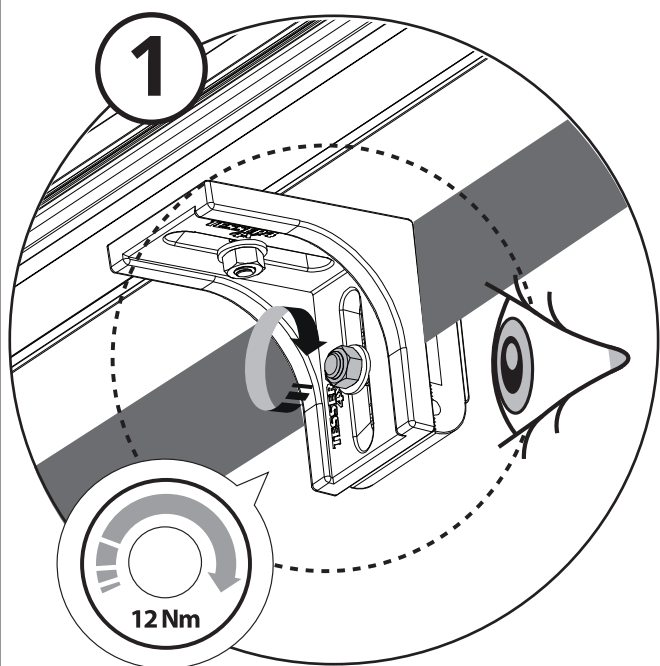


$X=X'$

$Y=Y'$



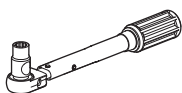
1



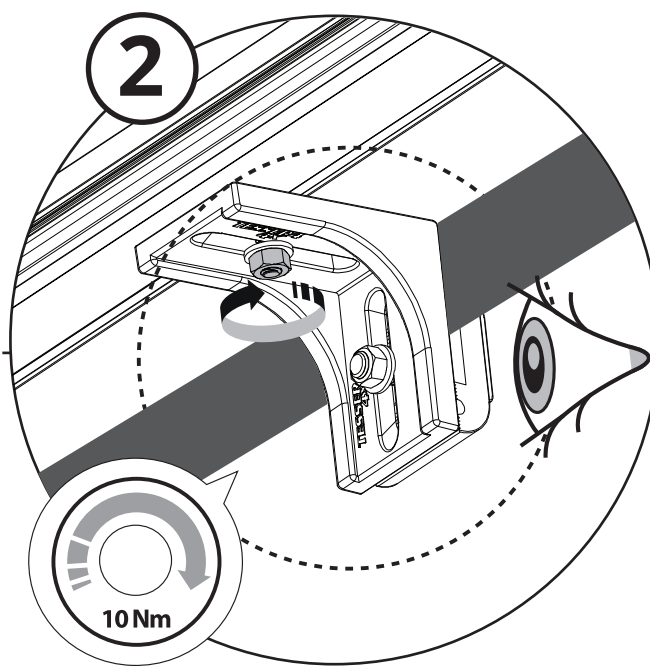
12 Nm



17 mm



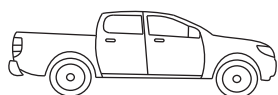
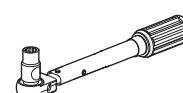
2



10 Nm



13 mm



+1000 km



+15000 km

[illegible]

Done by



GR: Εγχειρίδιο χρήσης
GB: Owners Manual
SF: Manuaalinen
F: Manuel d'utilisation
PL: Instrukcja obsługi
NL: Handleiding
TR: Kullanıcı kılavuzu
S: Bruksanvisning
E: Manual de usuario

H: Használati utasítás
P: Manual de utilização
RUS: Руководство пользователя
N: Brukerveiledning
D: Gebrauchsanleitung
CZ: Návod k použití
I: Manuale d'uso
DEN: Monteringsvejledning
RO: Manual de utilizare

Customer Service:

+30 (210) 5541161, +30 (210) 5541154 (08:00 - 16:00 EET)

Support department:

info@gianso.gr

Website:

www.tessera4x4.com

Address:

19.5 km of National road Athens-Korinthos (Elefsina) Greece, P.C: 19200